



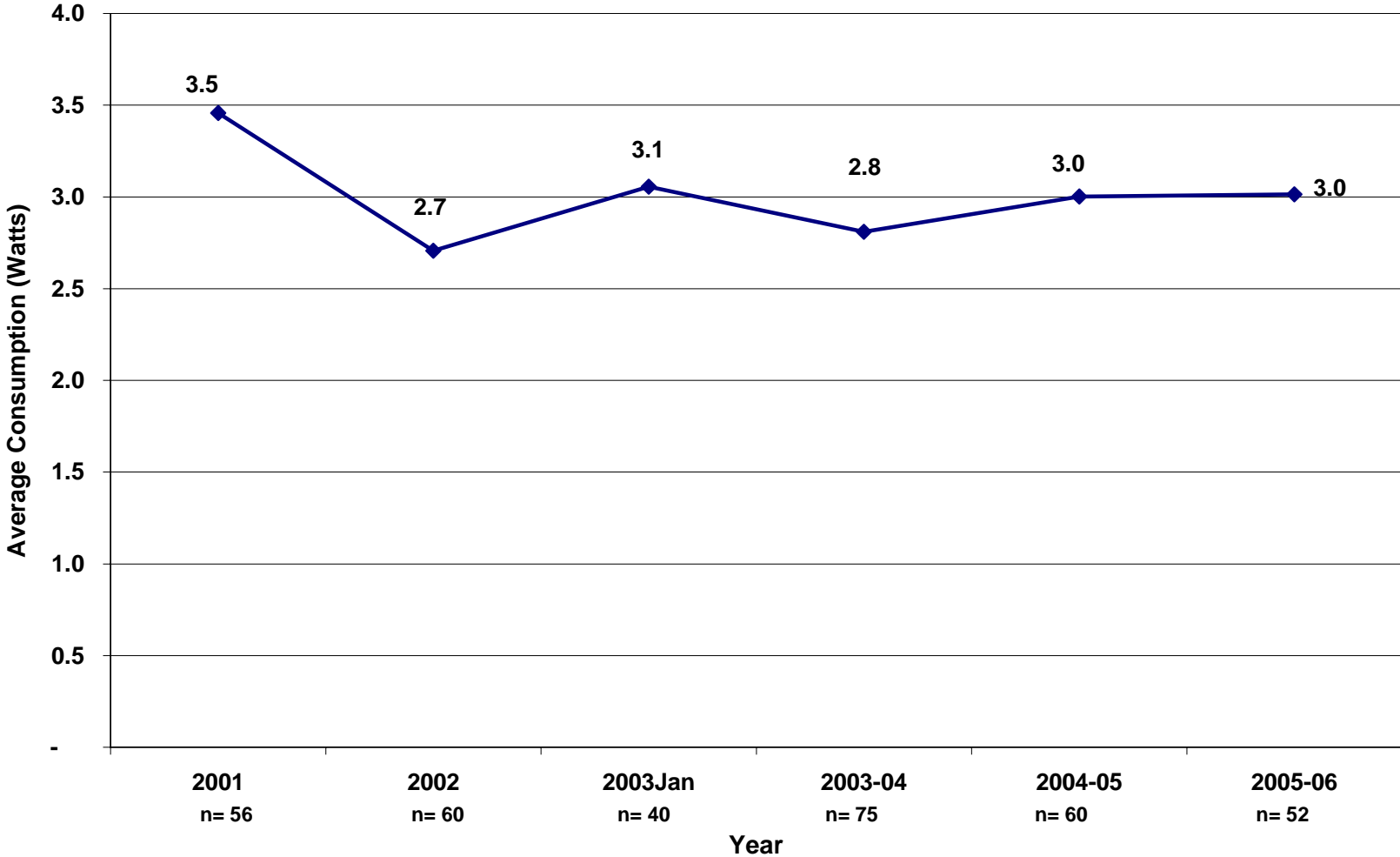
# Store Survey

- Undertaken since 2001
- Annual 2001, 2002, 2003
- Bi-annual – 2003/04, 2004/05, 2005/06
  - November and May of each year financial year
- 5400 appliances in measured in a off, passive, active and some on modes
- Usually 5 to 10 different stores
- Recent results Examples for
  - Microwaves
  - Sub woofer speakers

<b>Air Conditioner</b>	<b>AV Receiver</b>
<b>Breadmakers</b>	<b>Computers – Box</b>
<b>Computers – Home Theatre Box</b>	<b>Computers - Laptop</b>
<b>Computers - Monitor</b>	<b>Computers - Speakers</b>
<b>Dishwasher</b>	<b>Dryer</b>
<b>DVD Player</b>	<b>DVD Recorder</b>
<b>Espresso Machine</b>	<b>Fan</b>
<b>Gas Water Heater</b>	<b>Hard Disk Recorder</b>
<b>Hand-held Vacuum</b>	<b>Heater - Gas</b>
<b>Heater - Electric Portable</b>	<b>Home Theatre Systems</b>
<b>Home Entertainment Other</b>	<b>Microwave</b>
<b>Juicer</b>	<b>Multi Function Device</b>
<b>Printer – Inkjet</b>	<b>Printer – Laser</b>
<b>Stereo - Integrated</b>	<b>Set Top Box</b>
<b>Stereo - Component</b>	<b>Stereo – Portable</b>
<b>Toaster</b>	<b>Subwoofer</b>
<b>TV – Plasma</b>	<b>TV – LCD</b>
<b>TV – CRT</b>	<b>TV – Projection</b>
<b>VCR</b>	<b>Washer/Dryer</b>
<b>Washing Machine – Top Loading</b>	<b>Washing Machine – Front Loading</b>

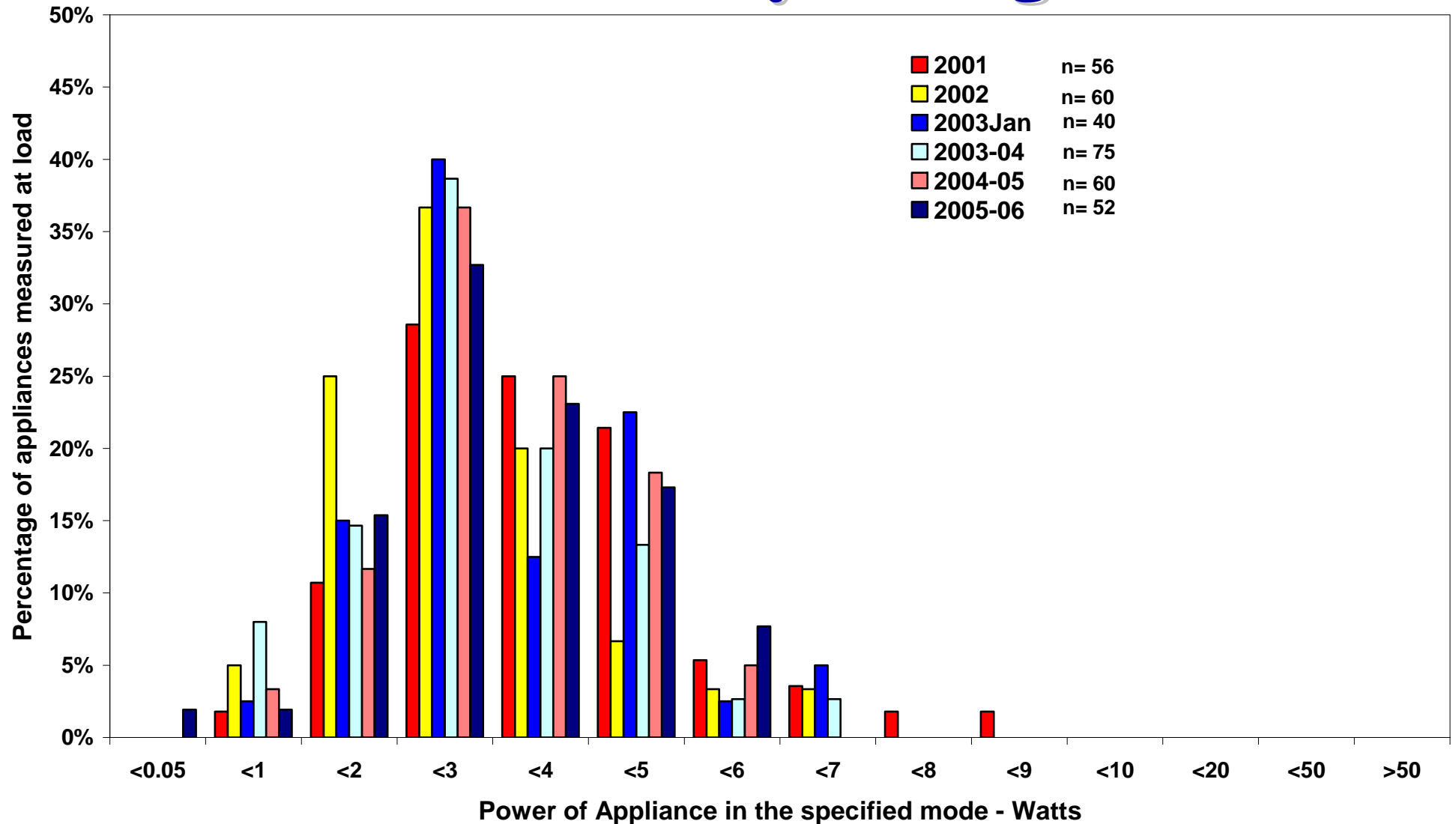
# Microwaves

## Passive Standby Trend

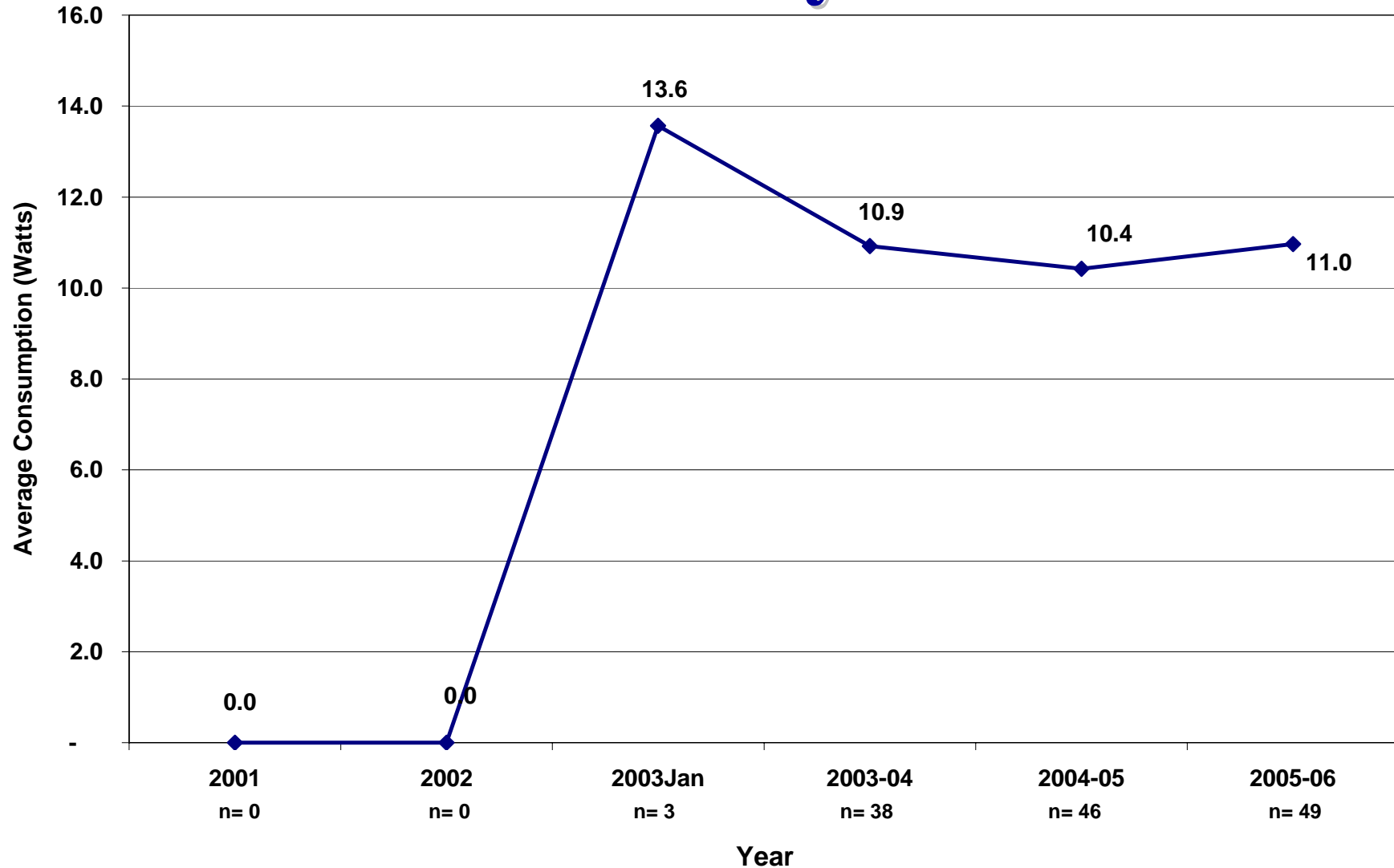


# Microwaves

## Passive Standby Histogram

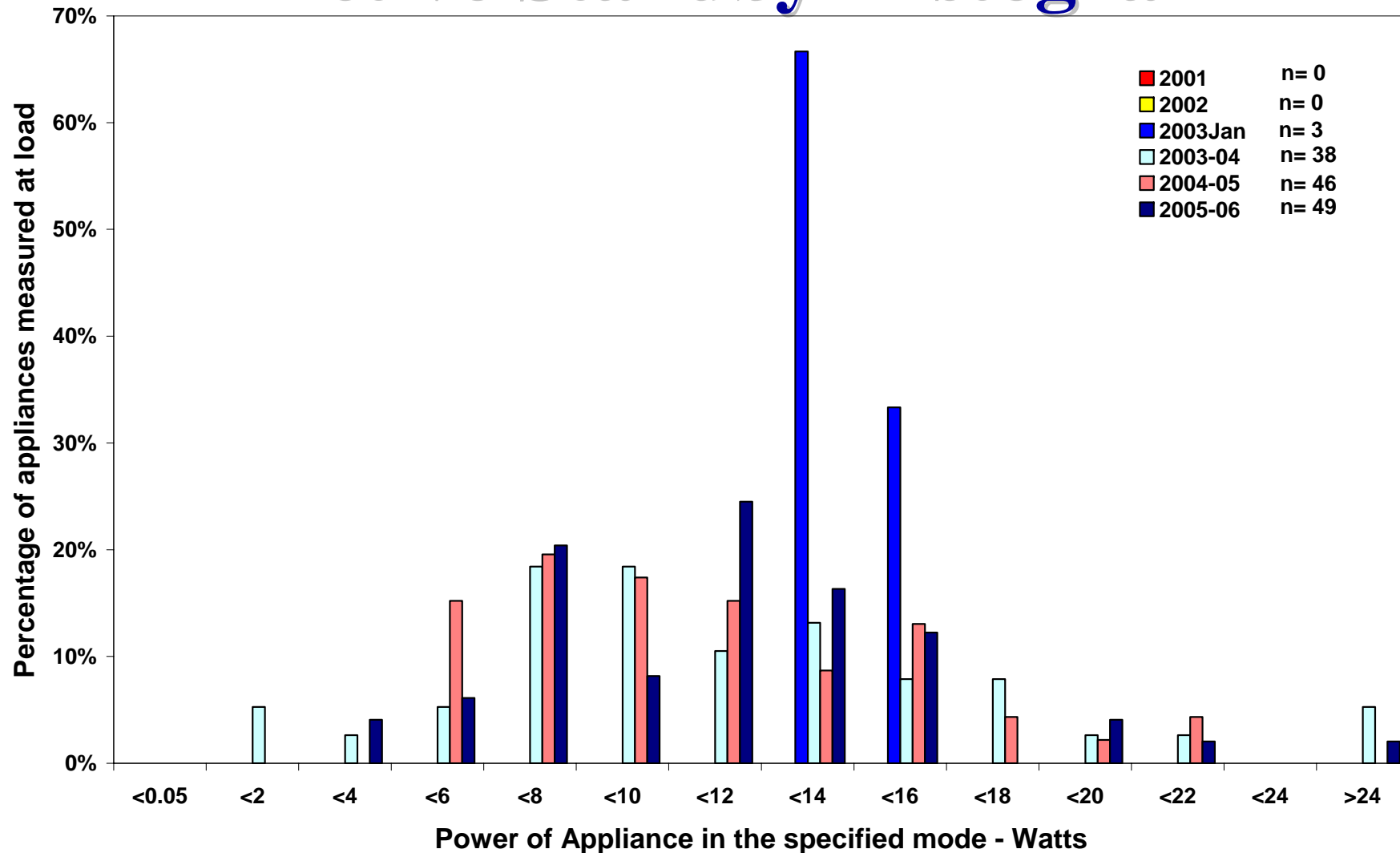


# Sub Woofer Speakers Passive Standby Trend



# Sub Woofer Speakers

## Active Standby Histogram





# Computer Peripherals

- Standby and on-modes – only concerned with those that are separately powered (not USB powered)
- Increasing in ownership and use, such as:
  - Routers/switches, network storage, modems, etc
  - USB drives and other powered devices
  - External speakers, TV Tuners,
- Power usage of networked products are also governed by network protocols
- International Programs
  - EU Code of Conduct Energy Consumption of Broadband Equipment
  - USA – LBL project proposal
  - Korea – target home automation products as part of standby strategy



# Peripherals Example

- Latest Data – 2005 Intrusive Survey
- Hubs and switches
  - ownership = 0.33
  - Average Active 5W, (1.3 W – 10.2W range)
- Modems
  - ownership 0.68
  - Average Active 6W, (1.2 W – 10.7W range)



# Peripherals Approach

- Examine horizontal MEPS
- Integrate with international programs
- Collect further data
  - from PC magazine test houses, store surveys
  - Industry cooperation
- Assessment report in 2007